



COLOR ME *Beautiful*

**FLORI ROBERTS**

Featuring Adrien Arpel and Gale Hayman

# COLOR ME Beautiful



## COLOR RENEW LIPSTICK

This lightweight, luscious, hydrating formula glides on easily, leaving creamy, moist-looking lips.

0.12 oz (3.4 g)



**BLAZE**  
#433607  
Warm Deep Brown Red



**JUST KISSED**  
#431726  
Muted Peach



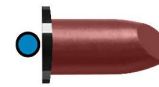
**RED CARPET**  
#433577  
Cool Bright Red



**BLOSSOM**  
#434277  
Warm Soft Coral Pink



**MANGO PUNCH**  
#432976  
Medium Warm Pink Orange



**RED VELVET**  
#434239  
Cool Ruby Red



**BROWN SUGAR**  
#433560  
Warm Rose Brown



**MOCHA LATTE**  
#433621  
Rose Brown



**SOFT PLUM**  
#CMLS20  
Cool Muted Plum



**CHILI**  
#433614  
Reddish Brown



**PINK CHAMPAGNE**  
#434253  
Cool Soft Pink



**SPICE**  
#433416  
Warm Brown Red



**CINNAMON**  
#CMLS51  
Warm Red Brown



**PLAYFUL**  
#433300  
Warm Pink



**SPICED CHAI**  
#434246  
Warm Soft Brown



**DUSTY ROSE**  
#CMLS07  
Cool Bright Pink



**PLUM SORBET**  
#434222  
Cool Soft Plum



**SUEDED ROSE**  
#433492  
Muted Rose



**FROSTED WATERMELON**  
#CMLS17  
Cool Bright Hot Pink



**PLUMBERRY**  
#433256  
Cool Berry



**GLAM**  
#433331  
Cool Vibrant Fuchsia



**GYPSY ROSE**  
#434260  
Cool Vibrant Rose



**JOY**  
#433324  
Cool Bright Rose

## PRO TIP! COLORFIX LIPSTICK SEALANT

Transforms any cream lipstick into a velvety semi-matte finish that's never chalky and stays all day.

.1 fl oz (3 ml) #431306



**SHADE SELECTION KEY**  
 Makeup products have been designated either Warm, Cool or Neutral.

Spring or Autumn (warm)  
 With red or gold highlights in the hair.

Flatters all.  
 (neutral)

Summer or Winter (cool)  
 Without red or gold highlights in the hair.

## CHROMA SOFT LIP PENCILS

Highly pigmented lip pencil that's a liner and lipstick in one, providing comfortable wear with a matte finish.

0.056 oz (1.6 g)

TANGERINE  
 #437988



RUSSET  
 #437957



## DESIGN LINE LIP PENCILS

A retractable gel lip liner that lines and primes for a long-lasting, full appearance.

0.056 oz (1.6 g)



EMBERGLOW  
 #437858

FRENCH ROSE  
 #437810

FRESH RASPBERRY  
 #437834

MANGO  
 #437841



NATURAL MAUVE  
 #437872

SIENNA  
 #437827

TEABERRY  
 #437865

*For a Flawless Face*

## UNDERGLOW ENHANCED LIGHT DIFFUSING GEL



A 3-in-1 luminous complexion enhancer. May be used under or over foundation or alone for fresh faced beauty.  
 1 fl oz (30 ml) #439951



## VELVET PERFECTION FOUNDATION PRIMER



This satin-like primer ensures a perfect foundation application. Fortified with Vitamins A & E to protect and soothe the skin while reducing the appearance of fine lines.  
 1 fl oz (30 ml) #420058





## MOISTURE COMPLEX ADVANCED ALOE FOUNDATION

This water-based liquid foundation protects and moisturizes with aloe, sesame, and sweet almond oil while collagen and elastin nourish and condition.

1 fl oz (30 ml)



## MORNING LIGHT DIFFUSING CREAM FOUNDATION

Cream foundation hydrates skin and softens fine lines, providing luminous coverage with light diffusers for a youthful glow.

1.7 fl oz (50 ml)



IVORY  
#439982  
Medium



## PERFECTION PRESSED POWDER

Foundation and setting powder in one product. Goes on beautifully sheer and layers easily for customized coverage.

0.48 oz (13.5 g)



SEPIA BEIGE  
#243944

## SOFT FOCUS BLENDING SPONGE

Creating an airbrushed effect has never been easier with the new Soft Focus Blending Sponge.

#233962



## KABUKI BRUSH

Essential accessory for new Color Pro Blush. Perfect tool for the application and finishing of mineral powder foundation.

#147436





# Beautiful Blush

## COLOR PRO BLUSH

Get a fresh, natural-looking pop of color with this pure pigment, buildable, mineral pressed powder blush.  
0.17 oz (4.8 g)



ALL SPICE  
(Autumn & Spring)  
#472255



CEDAR ROSE  
(Spring & Autumn)  
#472248



CORAL CRUSH  
(Spring & Autumn)  
#472316



MULBERRY  
(Winter)  
#472279



NATURAL VEIL  
(All Seasons)  
#472286



ORCHID FLUSH  
(Winter)  
#472347



PETAL POP  
(Winter)  
#472354



PINK PEONY  
(Summer)  
#472361



ROSEATE  
(Autumn)  
#472330



SOFT PLUM  
(Winter)  
#472231



SOFT ROSE  
(Summer & Winter)  
#472224



SWEET APPLEBERRY  
(Summer & Winter)  
#472262



SWEET MELON  
(Spring & Autumn)  
#472323

# Conceal & Seal

## MIRACULOUS CREAM CONCEALER & EYESHADOW BASE

Full-coverage concealer that hides imperfections while blending easily and seamlessly. Coverage lasts and lasts for total complexion perfection.  
0.25 oz (7 g)



LIGHT  
#422229



MEDIUM  
#422212



NEUTRAL  
#422236

## CORRECTIVE CONCEALER WHEEL

An artist's palette of concealers designed to make imperfections vanish before your eyes.  
0.28 oz (7.9 g) #422074



## Sun Protection

### PERFECT SKIN TINT TINTED MOISTURIZER

Tinted beautifier that offers SPF protection (Full Spectrum SPF31) to defend against indoor and outdoor daily aggressors. Easy to blend, it offers a hint of color while leaving the skin soft, hydrated, and prepped for makeup application.

60 g 2.0 oz



NEUTRAL  
#445112



NUDE  
#445136



PEACH  
#445129



## Amazing Eyes

### COLOR PRO EYE SHADOWS

A finely-milled, full pigment eyeshadow formula with shades to fit every season.

0.05 oz (1.5 g)



BANANA CREAM  
#450222



BALLET PINK  
#450208



ROSE QUARTZ  
#450291



COTTON CANDY  
#450239



PEACH TART  
#450253



GILDED APRICOT  
#450338



SEAFOAM SHIMMER  
#450369



POLISHED PEWTER  
#450277



SUNLIT SAGE  
#450376



TEAL ZEAL  
#450215



CARAMEL CREAM  
#450352



SILVER LILAC  
#450284



MALTED MILK  
#450246



TUSCANY PALM  
#450260



ROYAL VELVET  
#450321



NAVY NIGHTFALL  
#450345



## WATERPROOF AUTOMATIC EYEBROW PENCILS

Glides on easily. Makes even the most sparse brows look perfectly natural and polished. Dual ended with a blending spoolie.

0.09 oz (2.5 g)



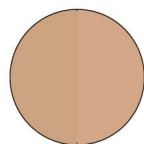
DARK BROWN  
#412480

LIGHT BROWN  
#412473

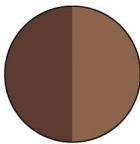
TAUPE  
#412466

## BROW POWDER DUO

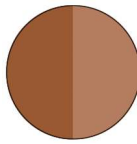
Customize your exact brow color with the new CMB Brow Powder Duo. They're easy to use, with a smudge-proof natural application.



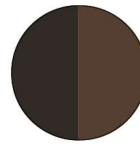
BLONDIE  
#412503



TOFFEE  
#412510



GINGER SNAP  
#412534



COFFEE BEAN  
#412527



*Lashes*

## SENSITIVE EYES MASCARA

Water-based. No clumping, no smudging. Lengthens, separates lashes. Hypo-allergenic and fragrance free botanical formula for sensitive eyes.

0.35 oz (10 g)



NAVY  
#440131

BROWN  
#440124

BLACK  
#440148

*Linens*

## WATERPROOF AUTOMATIC EYELINERS

Waterproof eye pencil provides bold color that won't smudge.

2.5 g (0.08 oz)



BLACK  
MAGIC  
#483350

DARK  
CHOCOLATE  
#483381

RICH  
NAVY  
#483367

KHAKI  
#483527



COLOR FANS FOR EVERY SEASON  
Don't leave home without your best colors!

*Warm & Light*



You look great in gold jewelry. You have a lighter skin tone with golden or reddish highlights in blond or light to medium brown hair.

#15-12076

SPRING



*Cool & Light*



You look stunning in silver or platinum jewelry, have a lighter skin tone with an overall muted appearance, and have ash blonde, ash brown, or silver grey hair (no red or gold highlights).

#15-12077

SUMMER



AUTUMN



You look beautiful in bronze and copper jewelry. Your deeper hair color includes red, auburn, reddish brown, or golden honey.

#15-12075

*Warm & Deep*

WINTER



You look amazing in silver or pewter jewelry and have a deeper skin tone. Hair colors for winters include black with blue tone highlights, deep brown, or salt and pepper.

#15-12078

*Cool & Deep*

DON'T KNOW YOUR SEASON?

Ask your consultant for a color analysis today.



# COLOR ME Beautiful

## COLOR PRO COLLECTIONS FEATURING COLOR FANS

You likely have a go-to color, the one in which you receive the most compliments. That's your color! And it is part of an entire palette, in which you look more youthful, with sparkling eyes and whiter teeth! In a world of infinite color options, how do you make good color choices for fashion and cosmetics? This color collection gets you started. Become your own stylist and makeup artist today.

### SPRING COLOR COLLECTION

Includes:  
Spring Seasonal Swatch Fan  
Spring Color Pro Blush  
Spring Color Renew Lipstick  
Sensitive Eyes Mascara



### SUMMER COLOR COLLECTION

Includes:  
Summer Seasonal Swatch Fan  
Summer Color Pro Blush  
Summer Color Renew Lipstick  
Sensitive Eyes Mascara



### AUTUMN COLOR COLLECTION

Includes:  
Autumn Seasonal Swatch Fan  
Autumn Color Pro Blush  
Autumn Color Renew Lipstick  
Sensitive Eyes Mascara



### WINTER COLOR COLLECTION

Includes:  
Winter Seasonal Swatch Fan  
Winter Color Pro Blush  
Winter Color Renew Lipstick  
Sensitive Eyes Mascara



Ask about our other beauty collections available through your consultant.

\*Items in collections are subject to change.



*Lips*



## LUXURY LIPSTICK


This ultra-sensational, pigment-rich formula coats lips with brilliant pops of color.

3.4 g




### SHADE SELECTION KEY

Makeup products have been designated either Warm, Cool or Neutral.

 Spring or Autumn (warm)  
With red or gold high-  
lights in the hair.

 Flatters all.  
(neutral)

 Summer or Winter (cool)  
Without red or gold  
highlights in the hair.

## MINERAL LIP SHINE

This mineral, non-sticky lipgloss has the power to illuminate lips for a dazzling finish.  
0.3 oz (9 g)



## LUSCIOUS LIP LACQUER

This creamy vinyl lip lacquer will not transfer for six hours. Non-sticky texture hydrates and soothes lips while adding a high-gloss finish.  
1 oz



## LIP PAINT MATTE LIQUID LIPS

A lightweight, ultra-pigmented, non-drying, matte liquid lipstick that covers your lips with rich color that lasts all day.  
0.2 oz (5.7 g)



## LUXURY LIP PENCILS

This waterproof automatic lip pencil helps outline, define, and contour the shape of lips, while preventing feathering.  
0.09 oz (2.5 g)



## DREAM LINER LIP PENCIL

A retractable gel lip liner that lines and defines lips for long-lasting beauty.  
0.4 oz (11.8 ml)



# Foundation & Powder

## CREAM TO POWDER FOUNDATION

For All Skin Types  
See perfect skin in one simple stroke. Applies like a cream with a velvety matte finish. Unparalleled shade range for all skin of color. Paraben free.

0.3 oz (8.5 g)



GINGER / S4 #30175		RUSSET / C6 #30120
TAWNY / S5 #30180		HAZELNUT / E1 #30145
AMBER / C1 #30185		CAROB / E2 #30150
TAN / C2 #30115		SEPIA / E3 #30155
SAND / C3 #30105		MINK / E4 #30160
SABLE / C4 #30135		BITTERSWEET / E5 #30165
CHESTNUT / C5 #30125		MOCHA / E6 #30190

## BASE STROKES STICK FOUNDATION

A creamy stick foundation that glides on effortlessly. Provides full coverage and a long-lasting, lustrous natural finish, while offering exceptional skincare benefits.

0.05 oz (14.2 g)



## PERFECT SKIN TINT

A powerful, tinted beautifier that offers SPF protection (Full Spectrum SPF31) to defend against indoor and outdoor daily aggressors. Easy to blend, it offers a hint of color while leaving the skin soft, hydrated, and prepped for makeup.

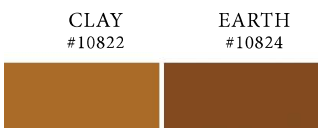
2fl oz #37013



## CORRECTIVE CONCEALER

A creamy liquid concealer that minimizes the look of flaws, blemishes and dark circles, with full, natural-looking coverage.

0.18 oz (5.18 g)





## LUXURY OIL BLOTTING PRESSED POWDER

BEST  
SELLER

A long-wearing, lightweight powder that delivers a soft, cashmere-like texture. It goes on beautifully for fully customized coverage.  
0.35 oz (10g)



INVISIBLE  
#31055



HONEY  
#31051



AMBER  
#31030



TAWNY  
#31053



TOAST  
#31025



SPICE  
#31040



COFFEE  
#31045



MEDIUM  
#31015



BROWN  
#31035



## SHINE-AWAY OIL BLOTTING PRIMER

This lightweight primer instantly refines the look of pores, regulates shine, and creates a matte surface for smooth, long-wearing makeup application.  
1.7 fl oz #35072



## Bronzer & Blush

### SHEER FINISH BRONZING POWDER

A silky smooth bronzer instantly and naturally gives the skin a touch of sunkissed radiance.  
0.35 oz (10 g)



SAND  
#11011



MEDIUM  
#11010



DEEP  
BRONZETTE  
#11012

NEW

### COLOR PRO BLUSH

A pressed powder blush that delivers beautiful color to flatter any skin tone. This professional quality blush is formulated to makeup artists' specifications.  
0.2 oz (5.7 g)



CINNAMON  
BRANDY  
#10942



FINE WINE  
#10941



SPICED  
CIDER  
#10943



RICH  
BERRY  
#10944



PAPAYA  
PUNCH  
#10940

## Eyes

### CROWN JEWEL LIQUID EYE SHADOW



RUBY  
#11309



FIRE OPAL  
#11305



TOPAZ  
#11303



DIAMOND  
#11301



TIGER'S EYE  
#11306



GOLD  
#11307



AMETHYST  
#11302



AMBER  
#11304



JADE  
#11308

Experience a shimmer that lasts as long as you do. Crown Jewels Liquid Shimmer Eye Shadow boasts a long-wearing formula that stays put throughout the day and night.  
5.0 g

### WATERPROOF AUTOMATIC EYELINER

This ultra-creamy, rich black pencil comes with a smudge tip, making a sultry, smokey eye virtually foolproof. It is waterproof and long-wearing and provides bold color that won't run or streak with wear.  
2.5 g



BLACK  
MAGIC  
#12323

## Brow Care

### PERFECT BROW PENCIL

Glides on easily, turning untamable, skimpy brows into perfectly natural, polished eyebrows. Accompanied by a special blending spoolie.  
1.2 g



DARK  
BROWN  
#12045



### BROW POWDER DUOS

Customize your exact brow color with the new Flori Roberts Brow Powder Duo. They're easy to use, with a smudge-proof natural application.



UMBER  
#12052



EBONY  
#12051

Does your skin have an uneven tone? Does it appear dull and lifeless? If so, choose this regimen and use twice daily, morning and night.

## Enlighten & Brighten



Emblica, the key ingredient in Enlighten, is derived from the fruit of the Indian Amla Tree. This natural antioxidant has been used for centuries to lighten and even skintone.

### PERFECT TONE CLEANSING FOAM

This self-foaming, purifying cleanser is the first step toward even-toned, refreshed, and balanced skin.

7 fl.oz (210 ml) #38000

### PERFECT TONE MOISTURE SUPER LIGHT

This highly concentrated moisturizing serum combats dark spots, evens skin tone, and boosts radiance. Using a high percentage of Emblica, this safe, natural skin tone treatment quickly fades dark patches for a beautiful, even skin tone without harmful chemicals.

1.75 oz (50 ml) #38010

### PERFECT TONE SKIN PREP

A toner formulated to balance, refresh and normalize the skin to enhance the brightening and lightening affects of Enlighten.

8 fl oz (237 ml) #38015

### PERFECT TONE FADE CREAM

This miraculous fade cream is a first of its kind. It's natural evening power comes from a proprietary blend that features Emblica, a natural berry from the Indian Amla tree, and alpha-arbutin, a laboratory tested, safe, effective ingredient derived from the bearberry. Proven to improve the appearance of dark spots such as acne scars, pigmentation, melasma, and sunspots as well as naturally darker areas such as knees and elbows. The next generation of brightening.

2 oz (57 g) #35000



## Essential Daily Care

### COMBINATION, DRY, OR MATURE SKIN TYPES

Does your skin feel tight in areas? Do you have visible wrinkles? If so, choose products from this regimen and use twice daily, morning and night for best results.



#### ULTIMATE-C CLEANSER

An energizing creamy cleanser that will maintain your skin's moisture balance while revealing softer, smoother and brighter skin.  
8 fl oz #37021

#### ULTIMATE-C CLARIFYING TONER

An energizing, alcohol-free toner that softens and smooths the skin, while protecting against the signs of aging.  
8 fl oz #35075



#### ULTIMATE-C CAPSULES

Fights dullness and irritation. These brightening, skin correcting capsules feature vitamin C (encapsulated for freshness and potency), and a vitamin E booster. Vegan friendly.  
30 capsules #35069

## Facial Treatment

#### EXFOLIATING FACIAL SCRUB & PRIMER

A nourishing, exfoliating scrub that is designed to remove dead skin to reveal smoother, more even perfect skin.  
4 oz #35030



BEST  
SELLER

#### MY EVERYTHING CREAM

Introducing the new and improved My Everything Cream, now fortified with a plethora of skin-transforming ingredients to take your skincare routine to new heights. Now with Niacinamide, Vitamin C and Hyaluronic Acid.

4 oz #35005





*For Beautiful Skin*

## OILY ACNE PRONE SKIN TYPES

Does your skin look or feel oily? Do you suffer from occasional break-outs? If so, choose these products and use morning and night.



### FRESH FOAMING CLEANSER

This oil fighting cleansing gel is both stimulating and invigorating! It has soybean, apricot and spearmint extracts to thoroughly remove oil, impurities and makeup without harsh drying agents.  
6 fl oz #36010

### DOUBLE O COMPLEX TONER

An oil-fighting toner that refreshes and purifies acne-prone skin to fight against oiliness, enlarged or clogged pores, and blemishes.  
8 fl oz #37020

### OIL-FREE HYDRATING GEL WITH HYALURONIC ACID

A lightweight moisturizer, formulated with seaweed extract, hyaluronic acid, and citric acid to boost radiance and hydration.  
2 fl oz #37011

*Body  
Treatment*

### SHEA NUT BODY BUTTER

Leaves a rich sheen on the body without a greasy feel. This champion of moisturizers is buttery in texture, heavenly in scent and provides intense moisture for all areas of the body, with premium shea nut, cocoa butter, and aloe vera extracts.  
8 oz #37030





## Anti-Aging

### SKIN CORRECTION COMPLEX

Alpha Hydroxy blend created to provide all you need for more youthful looking skin.

2 oz (57 g) #22-0710



### BIO CELLULAR NIGHT CRÈME

Wake up to more beautiful skin every morning. Reveal brighter, renewed skin, and reduce fine lines and wrinkles to create a smooth, vibrant complexion.

2.75 oz (78 g) #22-07711



### SWISS COLLAGEN DAY CREAM

For Mature Skin  
Ensure wellness and moisture for the skin. Fortified with 12 essential vitamins to nourish, soften lines, and hydrate the skin. Laboratory tested and approved for its restorative properties.

2 oz (57 g) #22-04049



### RETINOL PM CAPSULES

Improve texture, tone and minimize imperfections. Retinol PM is clinically proven to improve aged and photo-aged skin, as it diminishes fine lines and wrinkles by increasing cellular turnover. Vegan friendly.

30 capsules #22-04021



### THE COMPLETE FIX

The Complete Fix Youth Serum is a laboratory proven fix for aging! This remarkable complex aids in the reduction of wrinkles while providing a lifting effect for all skin types. 1 fl oz (30 ml) #22-04809



### INSTANT SUPER SERUM

Ideal for multiple signs of aging, visible age prevention, loss of firmness, lines and wrinkles, dryness, dehydration, dullness, loss of radiance, and uneven skin tone. Paraben free. Vegan friendly.

30 ml 1 fl oz #22-04810





*Crow's Feet*

## *Eye Care*

### EYE PERFECTION CRÈME

This advanced formula stimulates collagen and elastin production to support the delicate tissue around the eyes. Clinically tested results show 44.9% reduction of deep wrinkles, 16.6% increase in lifting effects and 4.4% reduction of roughness within eight weeks with daily use.  
0.5 fl oz #22-04071



### BIO CELLULAR NIGHT EYE GELEE

Wake up to a smoother, more youthful eye area. This anti-aging eye balm reduces furrows, lines, and crow's feet.

0.4 oz (11.3 g) #22-07721



## *Body Care*

### SKIN CORRECTION TREATMENT CREAM

This Alpha Hydroxy blend provides four body treatments in one. Exfoliate, firm, smooth, and hydrate with a single crème. Nourishes, protects and revitalizes aging skin. Rapidly absorbed with a delicious fragrance. Paraben free.

8 oz (226 g) #22-07810



#### *Why are AHAs so effective?*

Dead skin cells can accumulate on the surface of your skin, causing it to appear dull and lifeless. AHAs can help remove this buildup from the surface of your skin, leaving you with a brighter complexion. AHAs can also contribute to the appearance of younger-looking skin. Exfoliating skin's surface can help reduce the look of rough texture as well as diminish the appearance of fine lines and wrinkles caused by the slowdown of surface skin cell renewal that can happen as you age.

## Cleansers

### ONE STEP CLEANSING WATER

FOR FACE & EYES  
For All Skin Types  
Vitamin enriched cleansing water removes makeup, oil, and impurities. Leaving skin feeling refreshed, toned, and ready for moisturizer.  
6 fl oz (177 ml) #421932



### COCONUT CLEANSING CREME

For Mature or Dry Skin  
The refreshing essence of a tropical breeze that gently dissolves makeup while moisturizing the skin.  
4 oz (114 g) #22-06101



### PAPAYA ENZME CLEANSER

For All Skin Types  
Unique self-foaming cleanser rejuvenates, exfoliates, and melts makeup for a healthy, radiant complexion.  
8 fl oz (236 ml) #22-04036



*Why Choose Papaya?*

In the time it takes to cleanse and moisturize, you can see more radiant, smoother skin with the gentle action of papaya enzymes and papain. Known as a digestive enzyme, this ingredient gently and effectively eliminates dead cells and debris from surface skin while it stimulates collagen formation.

## Toners

### PAPAYA ENZYME TONER

For All Skin Types  
Naturally scented toner that freshens and softens while it preps the skin for moisturizer.  
6 oz (100 g) #22-04041



### LEMON LIME FRESHENER

For Combination Skin  
An energizing alcohol-free toner to refresh skin.  
8 fl oz (236 ml) #22-04074



*Everyone's Skin is Different*

Schedule a skincare analysis consultation with your beauty consultant to create your personalized skincare regimen.

Book today for the most youthful and radiant you!





## Serums & Moisturizers

### ALPHA ADVANCED AGELESS ELIXIR

Youth in a bottle. This blend of alpha and beta hydroxy acids of bilberry, sugar cane, sugar maple, orange, lemon, and willow bark extracts dramatically enhances skin tone and texture. Special encapsulated phospholipids contain tocopheryl (vitamin E), retinyl palmitate (vitamin A), and ascorbyl palmitate (vitamin C) for ultimate effectiveness.

1 oz (30 ml) #22-04808



### DAILY DEW OIL-FREE GEL MOISTURIZER

For Combination to Oily Skin Types

A lightweight moisturizer, formulated with seaweed extract, hyaluronic acid, and citric acid to boost radiance and hydration.

2.5 oz (70 ml) #22-04077



### C SOURCE VITAMIN C CAPSULES

For All Skin Types

An energizing capsule that brightens and improves skin with real citrus extracts. Feels like a facial everyday! Vegan friendly.

30 capsules #22-04001



### PLUMPING COLLAGEN LIP ENHANCEMENT SERUM

We formulated this vegan-friendly serum with powerful ingredients to give you the luscious, plump lips you've always dreamed of. Vegan friendly.

#22-02001



# Exfoliators

## HONEY AND ALMOND SCRUB

We've used pure honey, which has been revered for centuries as the ultimate beautifier, then added lots of real minced almonds in a creamy base, blended together for optimum deep pore cleaning.

5 oz (141 ml) #22-06531



## PAPAYA BRIGHTENING POLISH

For All Skin Types  
This indulgent polishing scrub is powered by papaya and AHAs to effectively retexturize and brighten skin, revealing a natural and youthful glow.

2.5 oz (71 g) #22-04082



## ALPHA ADVANCED AGELESS ELIXIR

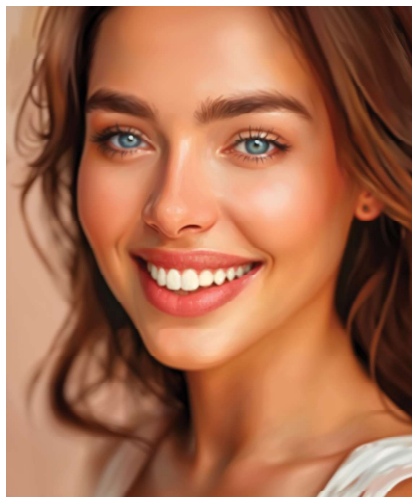
Youth in a bottle. This blend of alpha and beta hydroxy acids of bilberry, sugar cane, sugar maple, orange, lemon, and willow bark extracts dramatically enhances skin tone and texture. Special encapsulated phospholipids contain tocopheryl (vitamin E), retinyl palmitate (vitamin A), and ascorbyl palmitate (vitamin C) for ultimate effectiveness.

1 oz (30 ml) #22-04808



## Do You Know the Three Main Types of Exfoliation?

1. Physical exfoliation: This method uses scrubs, brushes, or sponges to physically remove dead skin cells.
2. Chemical exfoliation: This method uses ingredients like alpha hydroxy acids (AHAs) or beta hydroxy acids (BHAs) to dissolve the bonds between dead skin cells.
3. Enzymatic exfoliation: This method uses enzymes derived from fruits like papaya to gently dissolve dead skin cells.



## KALEIDOSCOPE BRONZING POWDER

A lovely powder that finishes makeup with a delicate bronze veil. The kaleidoscope of glowing skin tones provides an instant natural glow without dangerous sun exposure. No one color predominates: they blend for a perfect and natural-looking appearance. You control the depth of color. May be used by most skin tones, alone or with makeup. Doubles as eyeshadow.

0.39 oz #22-01330





# ADRIEN ARPEL

## *What's Your Skin Type?*

DRY

COMBINATION

OILY

### YOUR PRESCRIPTION FOR COMBINATION SKIN

Combination skin represents two opposite ends of the skin care spectrum. The majority of people fit into this category and have a T-zone (nose and forehead) that is oily, and cheeks and eye area that are dry. The unique formulation challenge with this skin type is to provide necessary hydration to the dry areas while balancing the oily ones.



#### PAPAYA ENZYME CLEANSER

For All Skin Types  
Unique self-foaming cleanser rejuvenates, exfoliates and melts makeup for a healthy, radiant complexion.  
8 fl oz (236 ml) #22-04036



#### THE COMPLETE FIX

The Complete Fix Youth Serum is a laboratory-proven fix for aging! This remarkable complex aids in the reduction of wrinkles while providing a lifting effect for all skin types.  
1 fl oz (30 ml) #22-04809



#### DAILY DEW OIL-FREE GEL MOISTURIZER

For Combination to Oily Skin Types  
A lightweight moisturizer, formulated with seaweed extract, hyaluronic acid, and citric acid to boost radiance and hydration.  
2.5 oz (70 ml) #22-07401



#### LEMON LIME FRESHENER

For Combination Skin  
An energizing alcohol-free toner to refresh skin.  
8 fl oz (236 ml) #22-04074



# YOUR PRESCRIPTION FOR DRY OR AGING SKIN

Dry or aging skin usually feels tight and could be flaky. Pores are almost unnoticeable. People with dry skin often deal with more surface wrinkles and fine lines than those with combination or oily skin due to dehydration.

## COCONUT CLEANSING CREME

**For Mature or Dry Skin**  
The refreshing essence of a tropical breeze that gently dissolves makeup while moisturizing the skin.  
4 oz (114 g) #22-06101



## PAPAYA ENZYME TONER

**For All Skin Types**  
Naturally scented toner that freshens and softens while it preps the skin for moisturizer.  
6 oz (100 g) #22-04041



## HONEY AND ALMOND SCRUB

We've used pure honey, which has been revered for centuries as the ultimate beautifier, then added lots of real minced almonds in a creamy base, blended together for optimum deep pore cleaning.  
5 oz (141 ml) #22-06531



## SWISS COLLAGEN DAY CRÈME

**For Mature Skin**  
Ensure wellness and moisture for the skin. Fortified with 12 essential vitamins to nourish, soften lines, and hydrate the skin. Laboratory tested and approved for its restorative properties.  
2 oz (57 g) #22-04049



## PLUMPING COLLAGEN LIP ENHANCEMENT SERUM

We formulated this vegan-friendly serum with powerful ingredients to give you the luscious, plump lips you've always dreamed of. Vegan friendly.  
#22-02001







## YOUR PRESCRIPTION FOR OILY SKIN

Oily skin looks normal after initial washing; but by mid-day, looks shiny. It's prone to blackheads and breakouts. Heat and hormones can increase oil production.



### PAPAYA ENZYME CLEANSER

For All Skin Types  
Unique self-foaming cleanser  
rejuvenates, exfoliates and  
melts makeup for a healthy,  
radiant complexion.  
8 fl oz (236 ml) #22-04036



### LEMON LIME FRESHENER

For Combination Skin  
An energizing alcohol-free  
toner that replenishes lost  
moisture to refresh skin.  
8 fl oz (236 ml) #22-04074



### DAILY DEW OIL FREE GEL MOISTURIZER

For Combination to Oily Skin Types  
A lightweight moisturizer,  
formulated with seaweed  
extract, hyaluronic acid, and  
citric acid to boost radiance and  
hydration.  
2.5 oz (70 ml) #22-07401



### RETINOL PM CAPSULES

For All Skin Types  
Highly active, with visible  
anti-aging properties. You  
will see softer, smoother skin  
immediately. Vegan friendly.  
30 Capsules #22-04021



# GALE HAYMAN BEVERLY HILLS COSMETICS



## Gale's Makeup Picks

### LIPSTICK

Experience dazzling color, extreme comfort, and luminous shine that seals in moisture with Gale's luscious, hydrating formula.  
0.12oz (3.4 g)



14K GOLD  
#0921046



ENCHANTRESS  
#0921087



ROSE  
SUEDE  
#0921089



CALIFORNIA  
CORAL  
#0921077



FIRST KISS  
#0921090



ROSE  
VEIL  
#0921085



CASABLANCA  
#0921084



HOLLYWOOD  
GLAM  
#0921081



SUNSET  
SHEER  
#0921211



CHIC PINK  
#0921078



MALTED  
MAUVE  
#0921088



TEA ROSE  
#0921091



DUBONET  
#0921083



PINK  
SPLENDOR  
#0921069



### COLOR LOCK LIP PENCIL

Translucent lip color "LOCK" creates an invisible color barrier around the lips. Enjoy lip gloss and dramatic lipstick shades without fear of feathering. With full lip application, will hold lipstick 3x longer.  
1.1 g 0.04 oz #0921020



### CREAMY LIP COLOR

This liquid lipstick covers lips with full, rich color. Full coverage that won't dry out or crack.  
.18 fl oz (5.5 ml)

CALI CORAL  
#0921252



FLAMINGO  
#0921251



## LIP-LIFT

This five-time, award-winning lip balm hydrates, smooths, and minimizes fine lines and wrinkles. The formula includes Maxi-Lip, a natural peptide that stimulates collagen and other naturally occurring compounds, which are moisture magnets to super-saturate lip tissue, leaving it moist and plump. Lip-Lift also contains a sunblock. Vegan friendly.

2.6 g (0.09 oz) #0910600  
MINT - 2.6 g (0.09 oz) #0910631  
XL - 3.4 g (0.12 oz) #0910533



## LIP-LIFT TINT

Give lips an alluring pout and a sexy veil of color. Features Maxi-Lip, the advanced lip conditioning peptide complex featured in best selling Lip-Lift, only with a hint of natural looking color. Vegan friendly.

2.6 g (0.09 oz)

14K GOLD  
#0921262



PETAL  
#0910633



BLACKBERRY  
#0921259



ROSEWOOD  
#0910610



BLUSH  
#0921260



## LIP-LIFT PLUMP & PRIME

Lip-Lift primer neutralizes the natural color of the lips and improves the staying power of lipstick and gloss while it plumps the lips for a sexy pout.

.1 fl oz (3 ml) #0910628



## LIP-LIFT BUFFER BALM

A sugar exfoliator that helps polish and refine lips. Vegan friendly.

3.4 g (0.12 oz) #0910634



## LIP-LIFT INTENSIVE SERUM

Infused with Maxi-Lip, vitamin E, aloe, vegetable collagen, murumuru and shea butter, niacinamide and tripeptides. Use as an intensive treatment at night and/or as a soft sheen gloss during the day over lipstick or alone. Vegan friendly.

4 ml 0.14 oz #0910635



### YOUTH-LIFT LUMINIZING PRIMER

A multifunctional face primer helps skin look softer and younger with micro-fine light diffusing pigments. Glides over or under makeup to refresh and enhance the complexion.

1 fl oz (30 ml) #0923336



### SPOTLIGHTS HIGHLIGHTER STICK

This precision highlighting stick incorporates a fine, delicate shimmer that leaves a subtle yet sexy luminescent glow.

#0923323



### LUXURY EYE SHADOW TRIO

Create spectacular eyes effortlessly with this color-coordinated eye shadow trio.

0.12 oz (3.4 g)



JET SETTER  
#0931267



PRIMAL INSTINCTS  
#0931267



### SUPER RICH MOISTURE CREAM

A ground breaking formula that hydrates and restores fragile aging skin. See immediate and long lasting results that will hydrate and protect for a continued look of freshness.

1 fl oz (30 ml) #0912144



### EYE-LIFT EYE SHADOW BASE

This creamy eyeshadow base is designed to smooth and even the lids, creating a perfect canvas for long-wear with absolutely no creasing.

0.1 fl oz (3 ml) #0931265



### YOUTH LIFT SUPER SERUM

A lightweight serum formulated to help smooth the appearance of fine lines and wrinkles while boosting collagen to leave your skin looking plumper and firmer. Contains hyaluronic acid, Neossance® squalane, Matrixyl® Synthe'6 tripeptide, niacinamide B3, and vitamin E. Vegan friendly.

30 ml 1 fl oz #0912147



*A Reminder to Include your Body  
During your Self-Care Routine.*

#### RETINOL PM CAPSULES

This concentrated serum is clinically proven to improve firmness and smoothness of the skin to combat aging. Naturally helps restore skin's radiance as it diminishes imperfections such as scars and dark spots. Vegan friendly.

30 Capsules #0912151



#### BEAUTY INFUSION VITAMIN C CAPSULES

The Beauty Infusion Facial Treatment Capsules from Gale Hayman contain a silky, moisturizing serum formulated to help reduce the appearance of fine lines and wrinkles, even out skin tone and leave behind a luminous looking glow. Vegan friendly.

30 capsules #0931270



### ***Award Winning***

The *Gale Hayman* Lip-Lift has been awarded QVC UK's

### **Beauty Excellence Award**

for

### **Best Lip Care Product**

for five consecutive years.



#### NAIL LACQUER

An array of glamorous nail polishes from vivid bolds to elegant neutrals.

0.5 fl oz (14.8 ml)



14K GOLD  
#0922202



HOLLYWOOD GLAM  
#0922212



CAPTIVATING CORAL  
#0922206



CLASSIC RED  
#0922209



BEVERLY HILLS NUDE  
#0922203





# The Beauty Business that Fits You!

Begin your beauty business journey **today!**

Receive **top monthly commissions** from 30-40% and **wholesale discounts** from 40-60%.

## Flexibility: Choose **when** and **where** you do business

- In-home, group, or private consultations
- Major malls (grants available)
- Salons and boutiques
- Women's conferences
- Social media

## Influence

- **Adrien Arpel:**  
High-tech anti-aging skincare with fruit and vegetable extracts
- **Color Me Beautiful:**  
The leading authority in color analysis
- **Flori Roberts:**  
The first in prestige Black beauty products
- **Gale Hayman:**  
Specialized and natural skincare that delivers astonishing results



## Tools

- Affordable Starter Kit\*, over \$500 in value with full-sized makeup and skincare products
- Custom affiliate links
- Promo codes to use and share with clients
- Virtual training and videos
- Support and assistance



*\*Items in kits are subject to change*

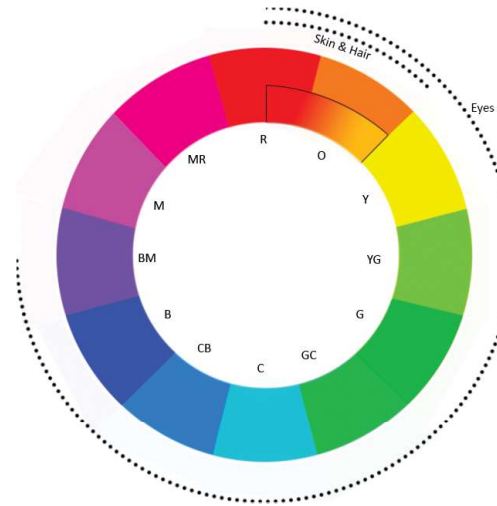
# Color Alliance Image Consulting

Where art and science come together to determine your perfect personal color palette.

## Color Alliance Color Analysis Concept:

Each person's coloring is unique. Color Alliance is a next-generation, computerized color analysis system that incorporates the specific colors of your skin, hair, and eyes. The result goes beyond the four seasons to over a million possible color combinations.

How do we arrive at this beautiful rainbow of individual palettes?



## Process:

Our Color Alliance Image Consultants are meticulous in their evaluation process. They use coordinate color chips to pinpoint each color's hue, value, and chroma, ensuring the most accurate assessment of your skin, hair, and eye colors. Special drapes are also used to further confirm the hue of your skin, leaving no room for error.

Our computer program analyzes and produces the three-part Color Alliance name (one of 372 classifications) and the custom-made Color Alliance Lifestyle Palette. Seasonal drapes confirm the analysis.



True Azure Summer

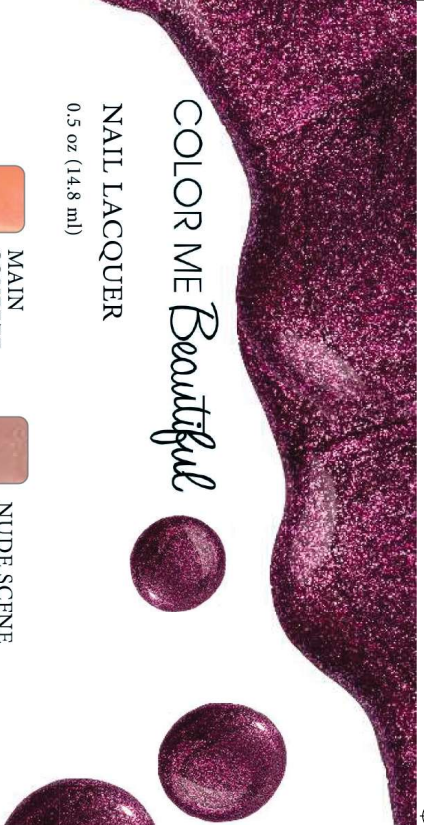


Azure:

Soft pink skin tones  
harmonizes with  
mid-range ash brown hair  
and eyes in purple blue hue.

*"I love my Color Alliance Lifestyle Palette! It has colors that harmonize beautifully with me, which makes it easy to shop and organize my wardrobe. My palette of makeup colors enhances my True Azure Summer coloring. I look great, and it saves me money."*

Mom/Part Time Consultant



# COLOR ME *Beautiful*

NAIL LACQUER

0.5 oz (14.8 ml)



MAIN  
SQUEEZE  
#462119



NUDE SCENE  
#462140

Discover exciting new products with your Color Me Beautiful and Flori Roberts Consultant.

Contact your Consultant for a personalized color consultation using our Four Seasons and Color Alliance systems. Receive expert advise on finding the perfect foundation shade and creating a customized skincare regimen.